

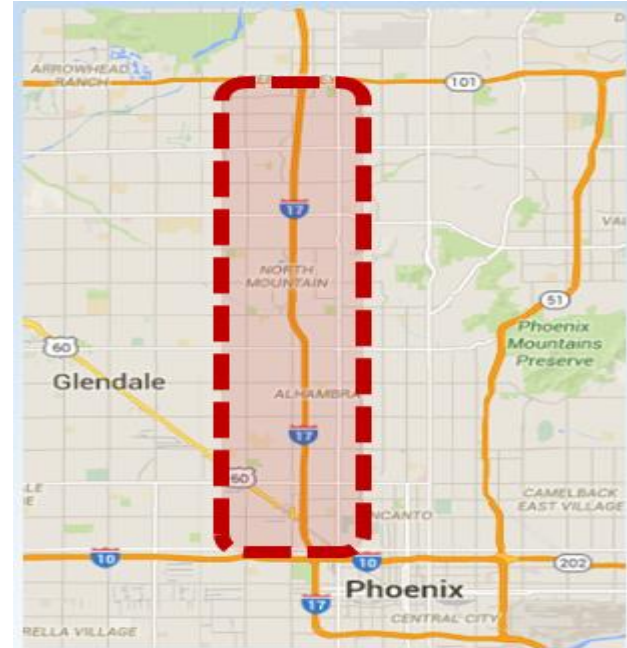


# Arizona DOT Wrong-Way Driving (WWD) Detection and Warning System Pilot Deployment

Presentation by Jim Windsor, P.E.  
November 21, 2016

# WWD Pilot Deployment Project Area

- ▶ I-17 between I-10 and SR-101
- ▶ Includes all exit ramps and freeway-to-freeway ramps
- ▶ Highest rate of wrong-way crashes and fatalities



# WWD Pilot Deployment

## Project Area (completed mitigation)

- ▶ Lowered and installed oversized signs



# WWD Pilot Deployment

## Project Area (completed mitigation)



Ramp Arrows with  
RPMs



HOV Raised Pavement Markers  
(RPMs)

# WWD Pilot Deployment

## Previously Tested Systems



# WWD Pilot Deployment

## Scope

- ▶ Accurately detect and validate all WWD incidents on freeway exit ramps and the mainline
- ▶ Provide an immediate automatic notification to the ADOT TOC and Department of Public Safety OPCOM
- ▶ Automatically position and activate CCTV cameras to validate and track the WWD
- ▶ Automatically activate pre-defined countermeasures
- ▶ Automatically log all WWD incidents and subsequent responses

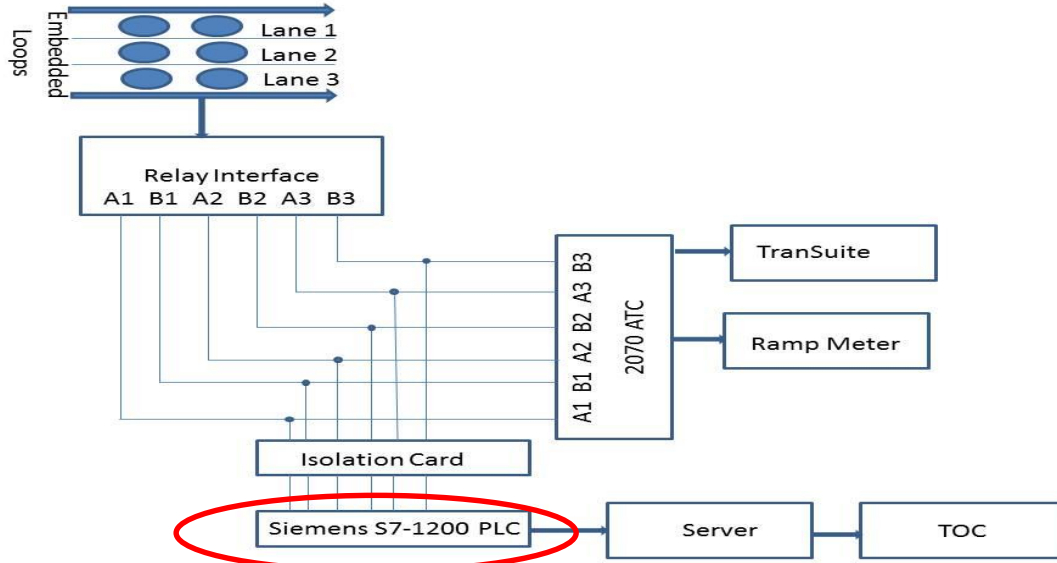
# WWD Pilot Deployment

## Detection Element

- ▶ **Exit ramp initial and verification (redundant) detection**
  - **Radar Detection at the top of the ramp**
  - **Loop Detection at the bottom of the ramp**
  - **Visual verification (e.g., “confidence” or capture camera)**
- ▶ **Existing mainline loop detection and redundant radar detection**
- ▶ **Freeway-to-Freeway loop detection and radar detection**
- ▶ **Existing mainline CCTV cameras**

# Detection Element

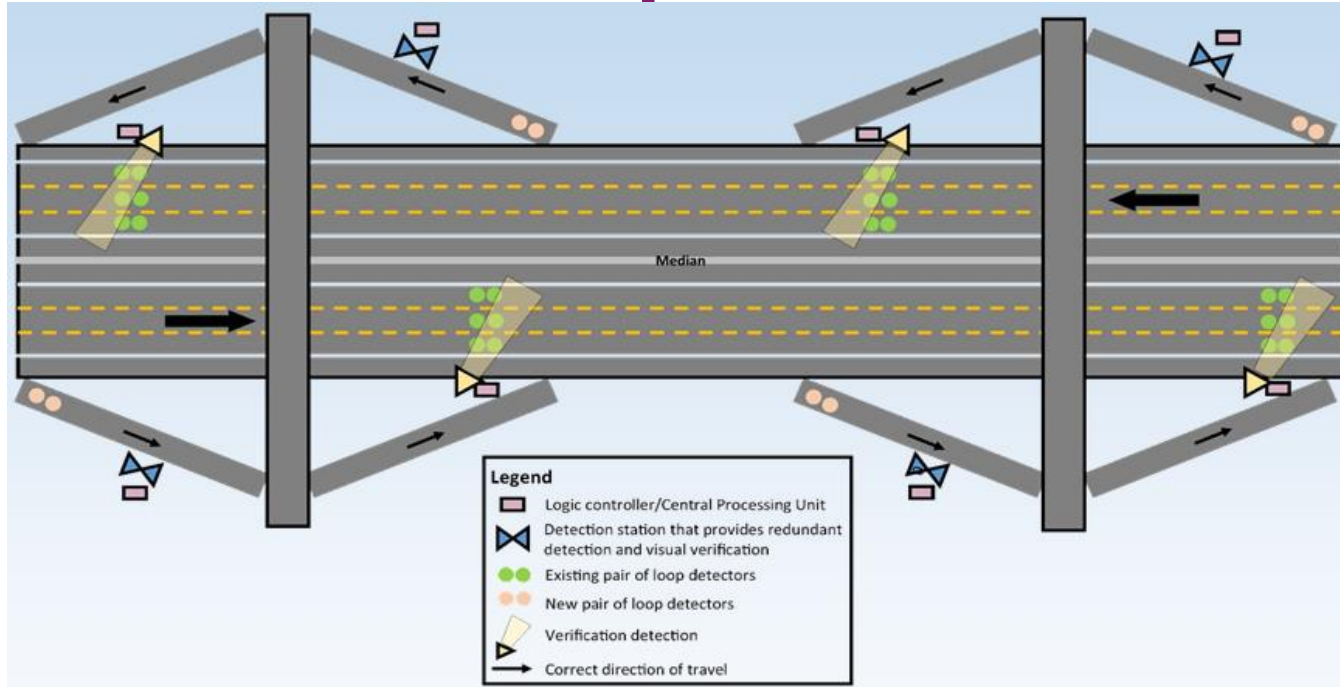
- Wrong-Way Detection Utilizing Existing Mainline Loop Detectors
- Proto-type was built by DOT staff





# WWD Pilot Deployment

## Detection Components



# WWD Pilot Deployment

## Warning Element

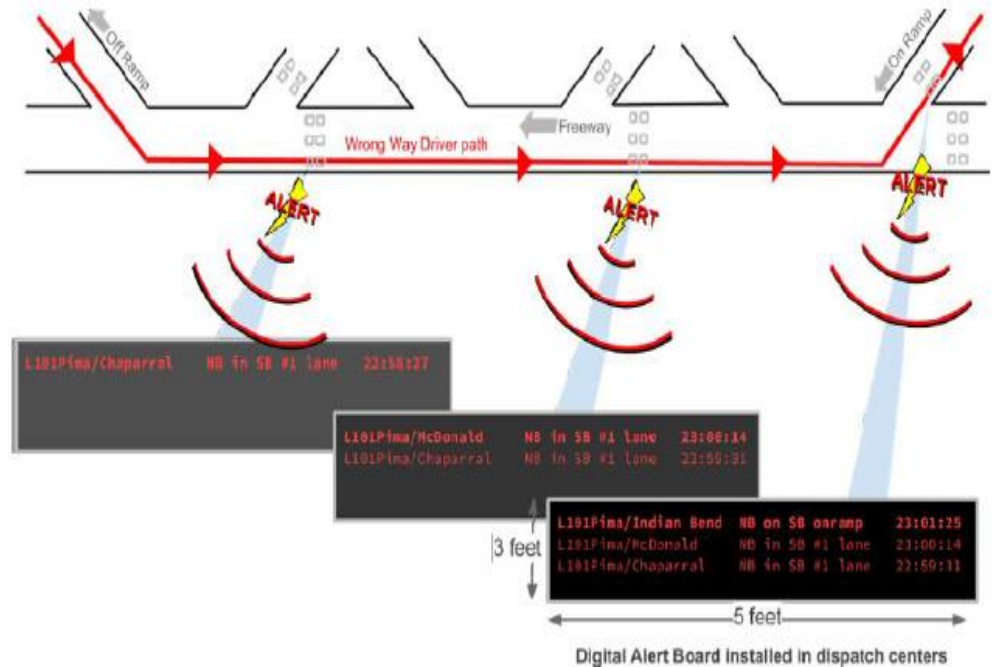
- ▶ Dynamic warning signs on exit ramps
- ▶ Posting of DMS messages
- ▶ Activation of upstream ramp meters
- ▶ Activation of TI traffic signal timing



# WWD Pilot Deployment

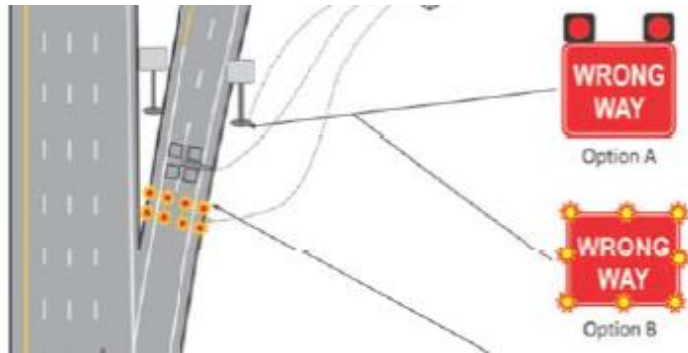
## Notification Element

- ▶ Digital alert board
- ▶ Desktop alert notification
- ▶ Email notification



# Notification Elements

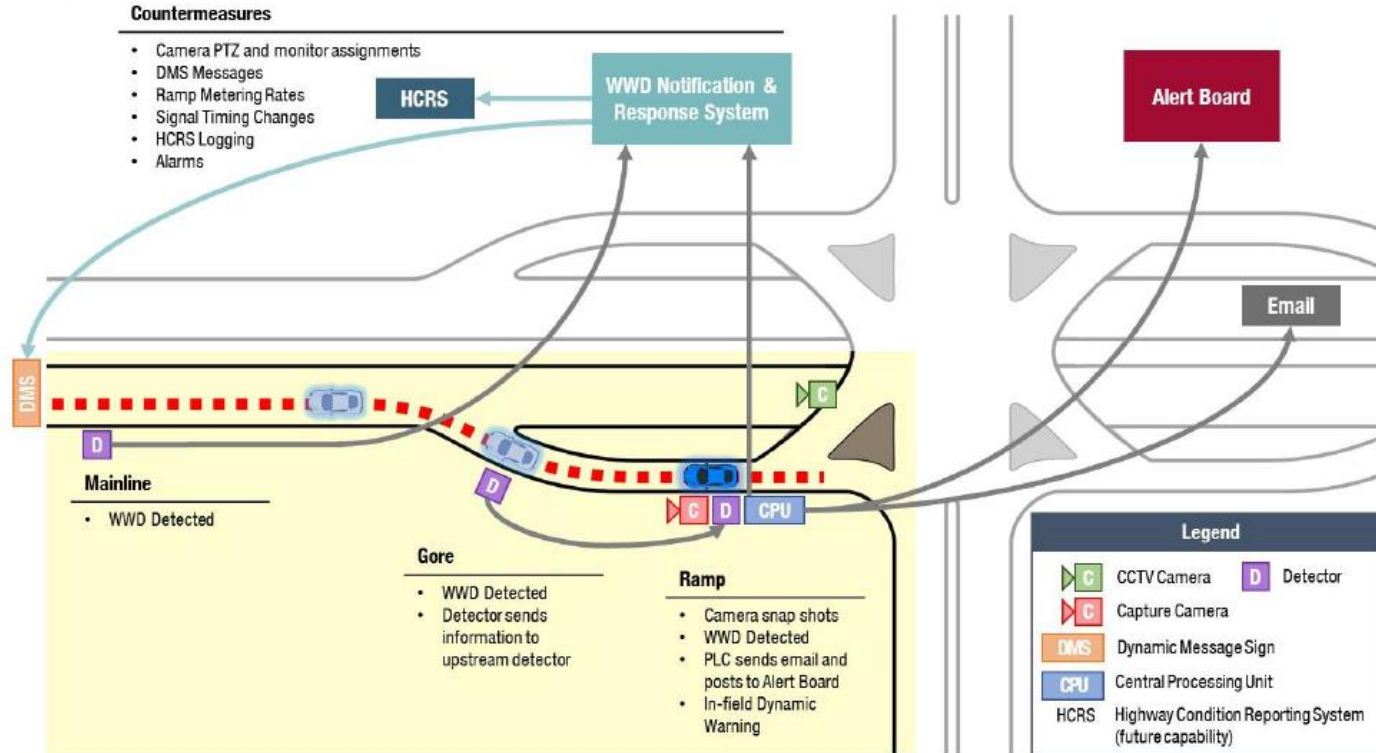
- Warning to the errant driver
- Digital Alert Board in Traffic Operations center and DPS
- CCTV cameras preprogrammed
- Dynamic Message signs automatically activated



L101Pima/Indian Bend	NB on SB onramp	23:01:25
L101Pima/McDonald	NB in SB #1 lane	23:00:14
L101Pima/Chaparral	NB in SB #1 lane	22:59:31

# WWD Detection and Warning System

## System Overview



# WWD Detection and Warning System

## Pilot Deployment Next Steps

- ▶ Finalize PA
- ▶ Present Options to Executive Leadership
- ▶ Secure Funding

# Thank You!

Jim Windsor, PE  
Deputy State Engineer  
Transportation Systems and Operations  
[jwindsor@azdot.gov](mailto:jwindsor@azdot.gov)  
602.712.6466

